

Davis
Lund

St. Wilfrids Crescent
Ripon
North Yorkshire
HG4 2JR
Guide Price £360,000





Accommodation

A lovely detached family home, occupying a great size plot and enjoying a woodland outlook to the rear. The property is situated on a highly sought-after development to the south side of the city, revealing an immaculate and spacious interior.

Constructed in 2020, the modern home offers a light and airy interior, with three good size bedrooms. The house sits on the edge of the development, backing onto woodland and the plot feels very established and private. The good size plot means the property no doubt offers the scope to extend, subject to necessary consents.

On the ground floor the main entrance door leads to the spacious entrance hall, with stairs rising to the first floor, an under stairs storage cupboard and cloakroom/WC. There is a living room to the front of the house, whilst a kitchen/diner runs the full width to the rear, fitted with a range of modern units and some integrated appliances, whilst double doors lead to the rear garden. A utility room offers space and plumbing for a washing machine, whilst also housing the gas central heating boiler and offering access to the driveway. To the first floor there is a landing with a loft access hatch and storage cupboard, main bedroom with stylish ensuite facilities, two further double bedrooms and the house bathroom, part tiled and fitted with a white suite, including a bath with glazed screen and shower over.

Externally there is an open lawned garden to the front of the house, with a pathway to the front door. A block paved driveway provides parking for numerous vehicles and gives access to the single garage, fitted with an EV charger point. Access is available to the side of the house, leading to the lovely enclosed rear garden, which is fully enclosed and ideal for purchasers with pets and children.

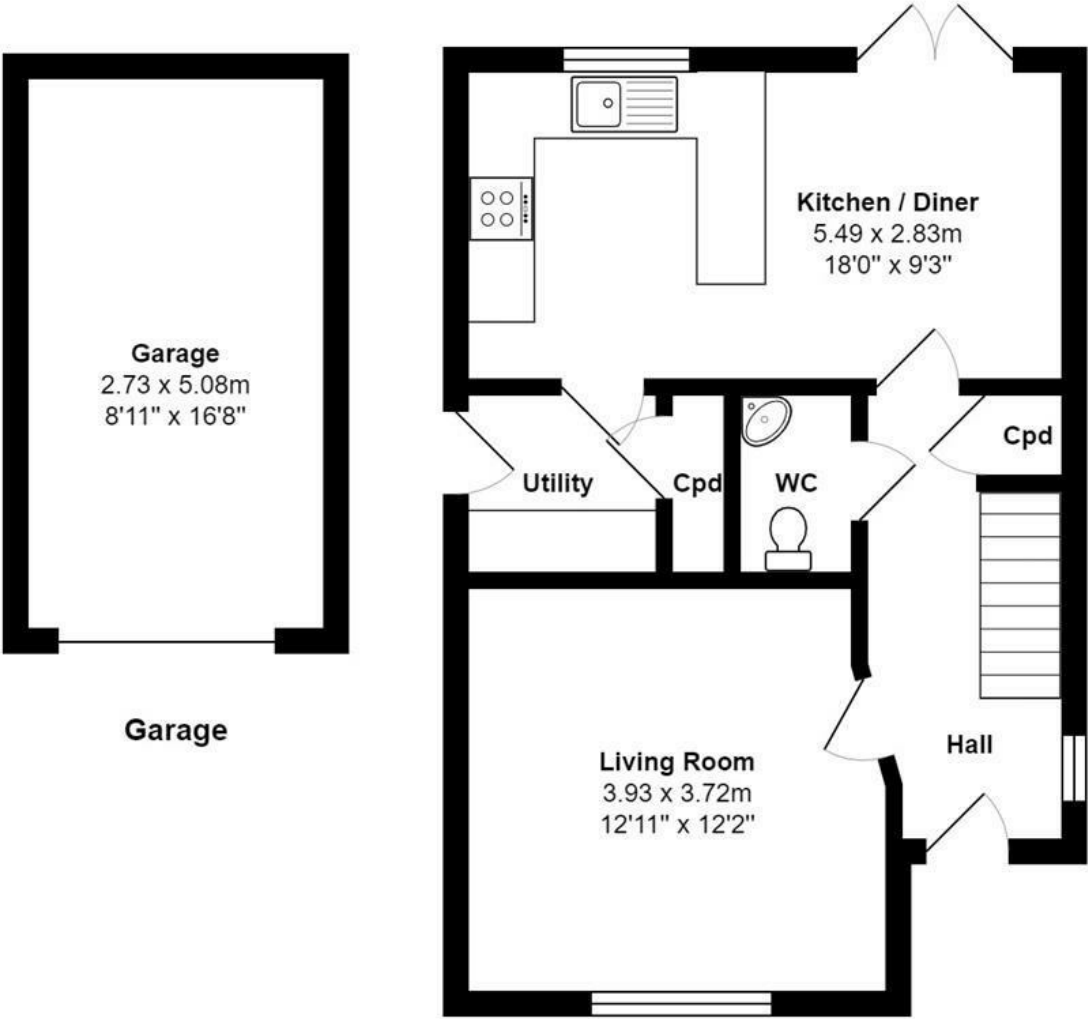
Located in a sought-after residential area, the property is situated close to schools and amenities, whilst also being near to open countryside. The bypass is available close by, whilst the property is also situated close to the 36 bus route, giving ease of access to Harrogate and Leeds.

Sure to suit a range of purchasers, this energy efficient home is a must to view.

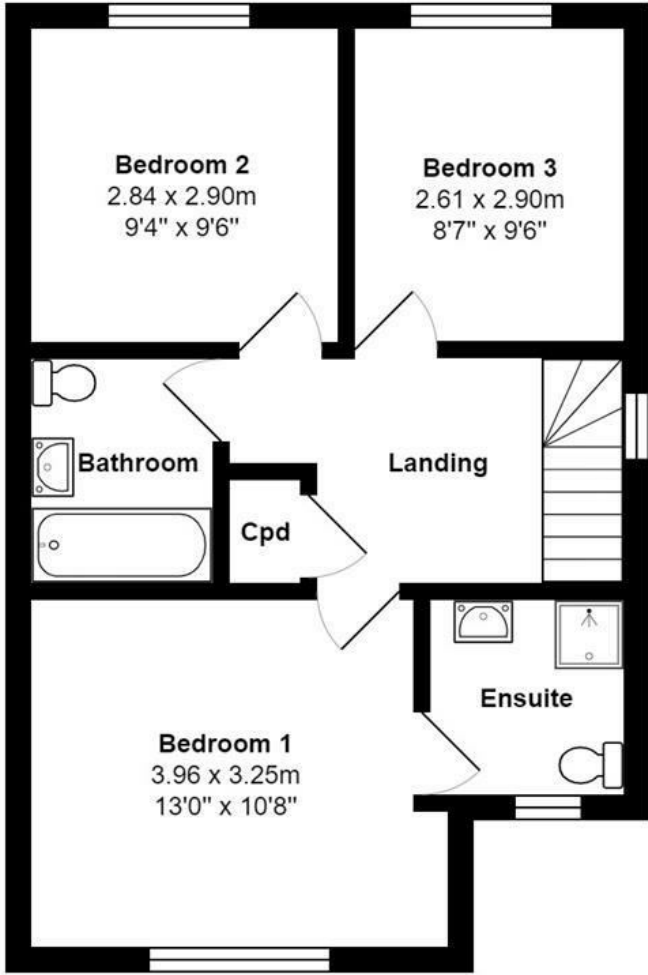




Floorplan



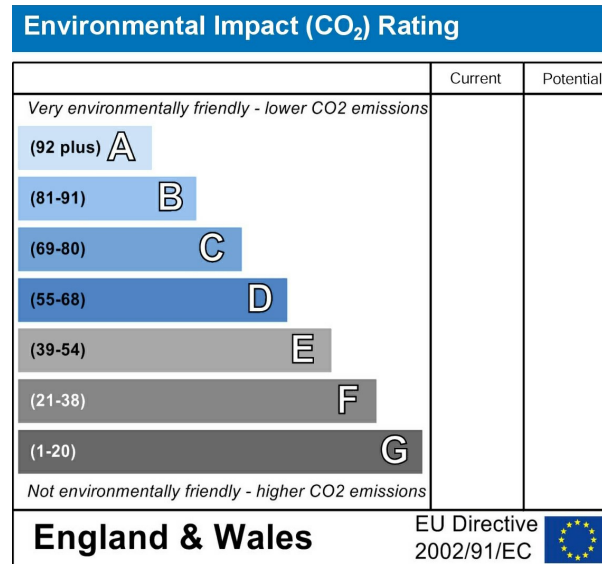
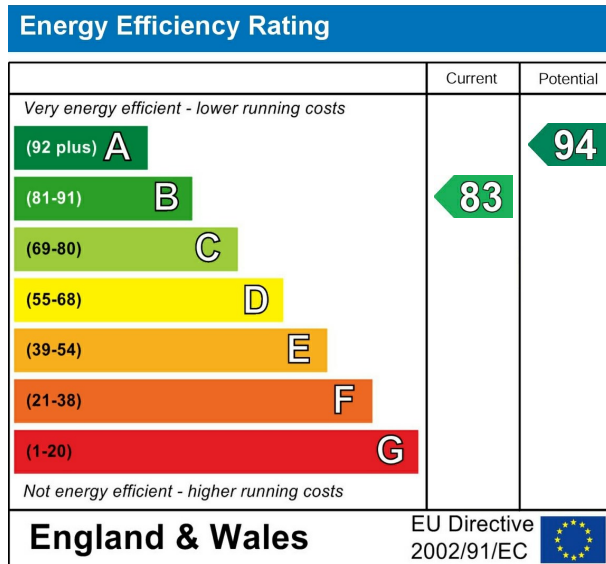
Ground Floor



First Floor



EPC



VIEWING BY APPOINTMENT ONLY - 01765 602233 - sales@davislund.co.uk - www.davislund.co.uk

MONEY LAUNDERING REGULATIONS 2003 - Intending purchasers will be asked to produce identification and proof of financial status when an offer is received. We would ask for your co-operation in order that there will be no delay in agreeing the sale.

Davis & Lund Ltd trading as Davis & Lund, registered office: 5a Kirkgate, Ripon, HG4 1PA. Registered in England No 10034416. Registered for VAT No 243 2008 51

Davis & Lund Ltd have prepared these property details on the seller's behalf. Davis & Lund Ltd have taken reasonable steps to check the content, but no information should be taken as a statement of fact. All measurements are approximate and should be taken as a guide, potential purchasers should satisfy themselves as to the accuracy. Floorplans are produced as a guide and they are not to scale. All fixtures and fittings are not included in the sale, unless stated. Heating systems, electrics, services and appliances have not been tested and no warranty is given to their working order

