



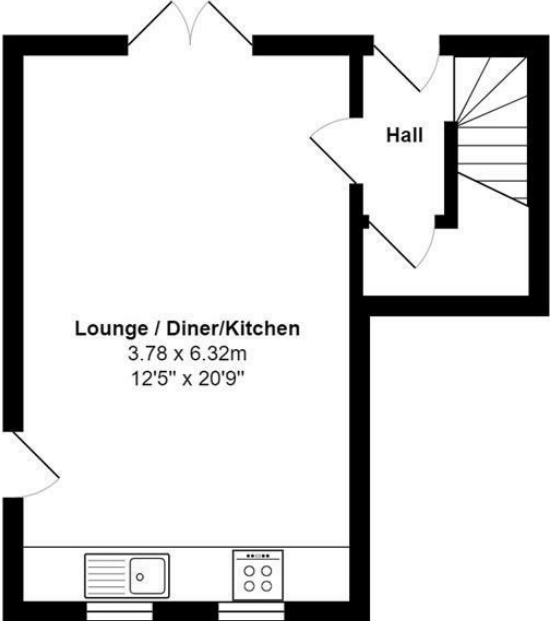


## Accommodation

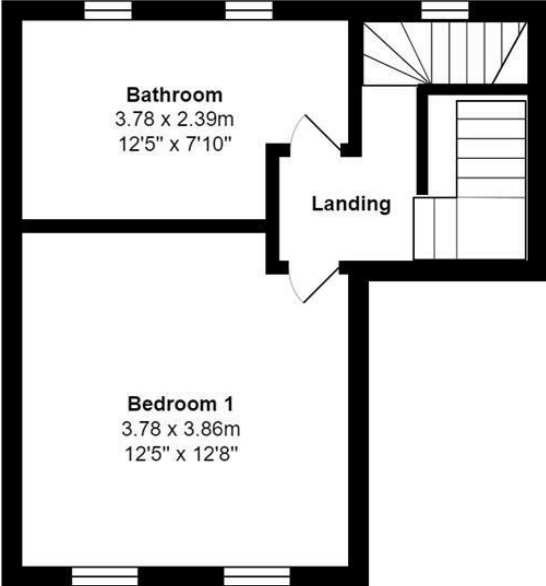




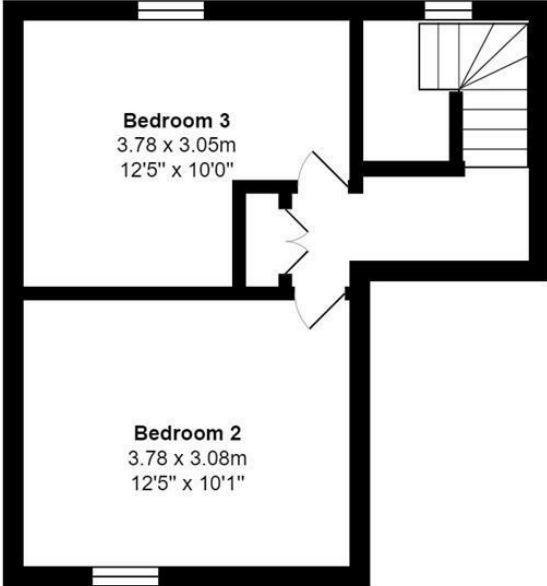
**Floorplan**



**Ground Floor**




**First Floor**




**Second Floor**



EPC

Energy Efficiency Rating		
	Current	Potential
<i>Very energy efficient - lower running costs</i>		
(92 plus) <b>A</b>		
(81-91) <b>B</b>		
(69-80) <b>C</b>		
(55-68) <b>D</b>		
(39-54) <b>E</b>		
(21-38) <b>F</b>		
(1-20) <b>G</b>		
<i>Not energy efficient - higher running costs</i>		
<b>England &amp; Wales</b>	EU Directive 2002/91/EC	

Environmental Impact (CO <sub>2</sub> ) Rating		
	Current	Potential
<i>Very environmentally friendly - lower CO2 emissions</i>		
(92 plus) <b>A</b>		
(81-91) <b>B</b>		
(69-80) <b>C</b>		
(55-68) <b>D</b>		
(39-54) <b>E</b>		
(21-38) <b>F</b>		
(1-20) <b>G</b>		
<i>Not environmentally friendly - higher CO2 emissions</i>		
<b>England &amp; Wales</b>	EU Directive 2002/91/EC	

VIEWING BY APPOINTMENT ONLY - 01765 602233 - [sales@davislund.co.uk](mailto:sales@davislund.co.uk) - [www.davislund.co.uk](http://www.davislund.co.uk)

**MONEY LAUNDERING REGULATIONS 2003** - Intending purchasers will be asked to produce identification and proof of financial status when an offer is received. We would ask for your co-operation in order that there will be no delay in agreeing the sale.

Davis & Lund Ltd trading as Davis & Lund, registered office: 5a Kirkgate, Ripon, HG4 1PA. Registered in England No 10034416. Registered for VAT No 243 2008 51

Davis & Lund Ltd have prepared these property details on the seller’s behalf. Davis & Lund Ltd have taken reasonable steps to check the content, but no information should be taken as a statement of fact. All measurements are approximate and should be taken as a guide, potential purchasers should satisfy themselves as to the accuracy. Floorplans are produced as a guide and they are not to scale. All fixtures and fittings are not included in the sale, unless stated. Heating systems, electrics, services and appliances have not been tested and no warranty is given to their working order

