

Davis
Lund

Kings Mead
Ripon
North Yorkshire
HG4 1EJ
Guide Price £585,000





Accommodation

A beautifully presented detached family home, revealing meticulously maintained and skilfully extended accommodation, whilst also enjoying a lovely quiet setting and being tucked away on a highly sought after development to the outskirts of Ripon.

The property has been much improved over the years, having undergone a substantial extension and now offering a modern interior and quality finish, including a stylish kitchen, beautifully appointed bathrooms, two ensembles and lovely private landscaped gardens.

The main entrance door leads to an entrance hallway with stairs rising to the first floor and access into the living room, offering a double aspect and double doors leading to the substantial garden room, fitted with a solid roof for all year round use. The breakfast kitchen comes fitted to a very high standard, with an extensive range of quality units and integrated appliances, whilst a tiled floor flows into the good size utility room, offering great storage space and a cloakroom/WC. The snug/family room completes the downstairs layout, adding flexibility to the accommodation. To the first floor there is the landing with loft access, main bedroom with a stylish fully tiled ensuite shower room, guest bedroom which again offers an ensuite, two further good size bedrooms and the house bathroom, once again fully tiled and beautifully finished.

Externally there is an open lawned garden to the front of the house, with steps and pathway leading to the front door. A driveway provides parking and gives access to the double garage, with an up and over door and further rear access door. Gated access leads to the fantastic rear garden, which is fully enclosed and affords a high degree of privacy, whilst also attracting plenty of sunshine. The garden is laid to lawn, with an extensive raised patio entertainment area and an insulated garden room, sure to suit a number of uses, whilst also offering a further private seating area, creating an ideal space to relax.

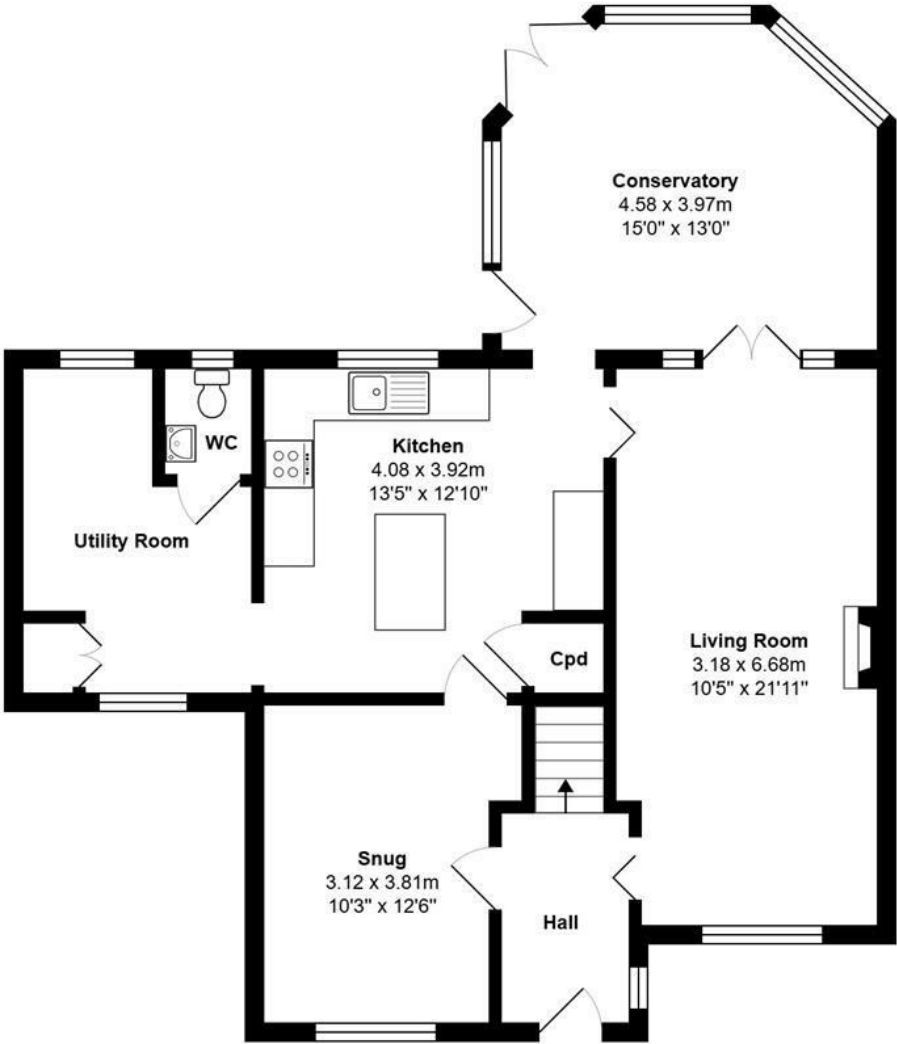
The house offers countryside walks on the doorstep, whilst also being just a short walk from the city centre, along quiet back lanes and giving ease of access to shops, amenities, schools and transport links.

Properties of this quality are rare to market, being ready to move into and sure to suit a variety of potential purchasers, so an early viewing is advised on this highly desirable home.

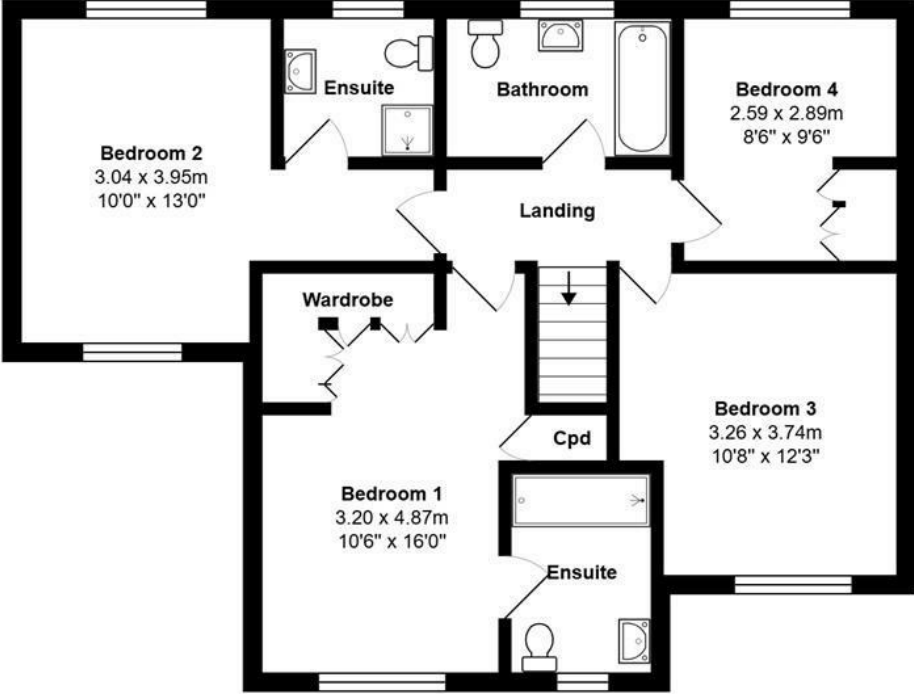




Floorplan



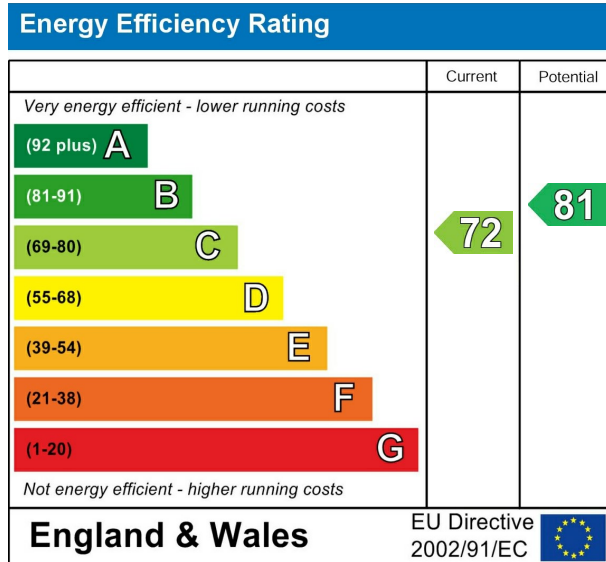
Ground Floor



First Floor



EPC



VIEWING BY APPOINTMENT ONLY - 01765 602233 - sales@davislund.co.uk - www.davislund.co.uk

MONEY LAUNDERING REGULATIONS 2003 - Intending purchasers will be asked to produce identification and proof of financial status when an offer is received. We would ask for your co-operation in order that there will be no delay in agreeing the sale.

Davis & Lund Ltd trading as Davis & Lund, registered office: 5a Kirkgate, Ripon, HG4 1PA. Registered in England No 10034416. Registered for VAT No 243 2008 51

Davis & Lund Ltd have prepared these property details on the seller's behalf. Davis & Lund Ltd have taken reasonable steps to check the content, but no information should be taken as a statement of fact. All measurements are approximate and should be taken as a guide, potential purchasers should satisfy themselves as to the accuracy. Floorplans are produced as a guide and they are not to scale. All fixtures and fittings are not included in the sale, unless stated. Heating systems, electrics, services and appliances have not been tested and no warranty is given to their working order

